

INTRODUÇÃO AOS ANNELIDA

Annelida: Caracterização geral



FILO ANNELIDA

CLASSE CLITELLATA

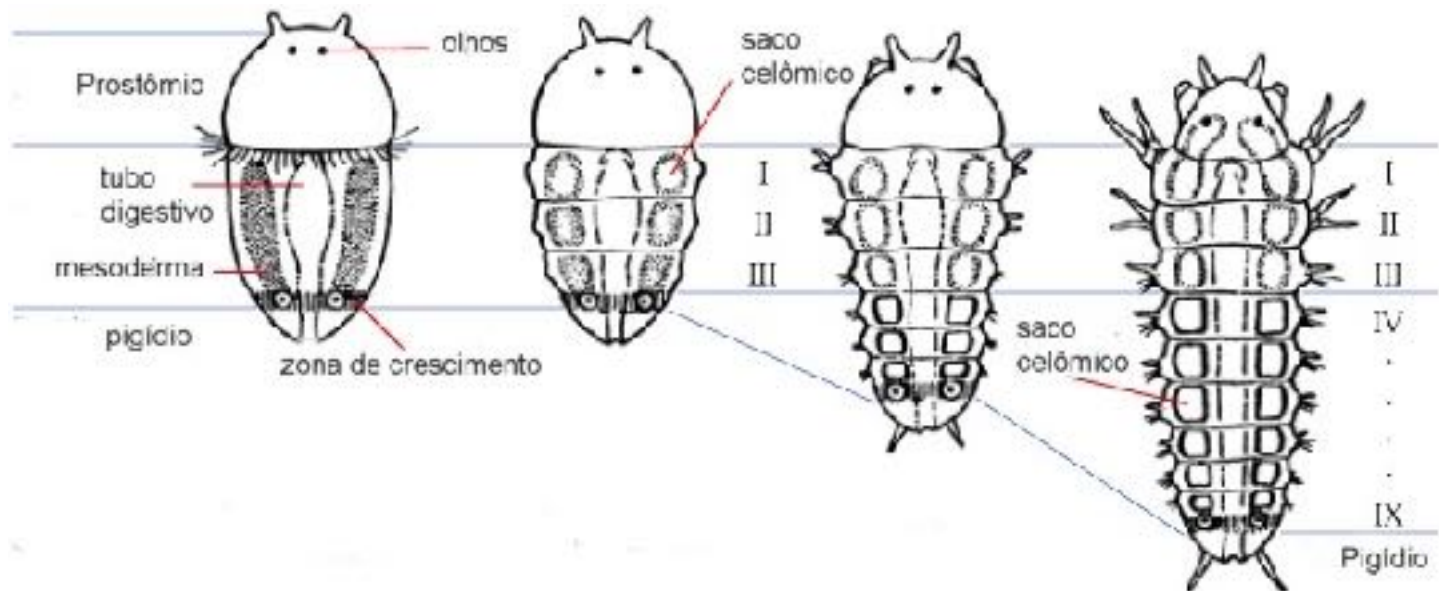
SUB-CLASSE OLIGOCHAETA

SUB-CLASSE HIRUDINIDEA (= HIRUDINEA)

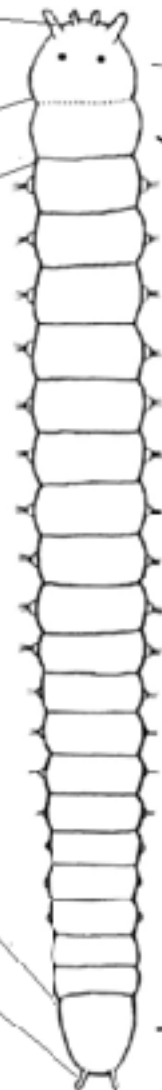
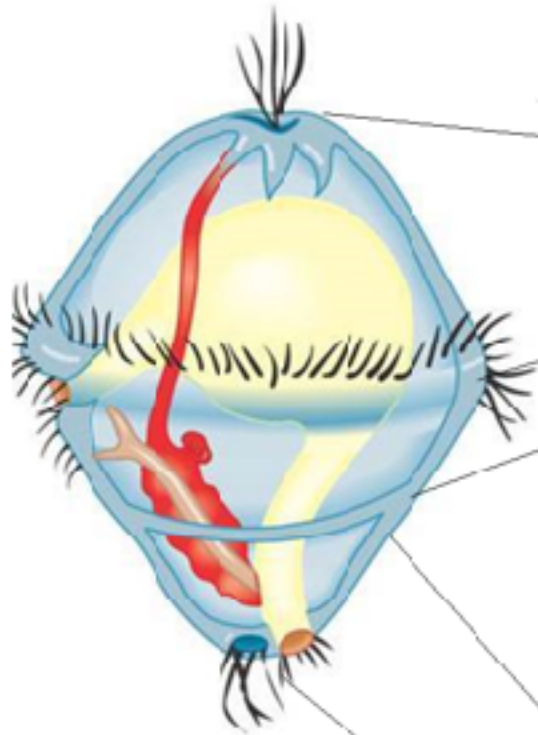
CLASSE POLYCHAETA

1. Vermes segmentados bilaterais e esquizocélicos
2. Segmentos surgem por crescimento teloblástico
3. Trato digestivo completo
4. Sistema circulatório fechado
5. Sistema nervoso ventral bem desenvolvido
6. Metanefrídeos e protonefrídeos
- 7. *Cerdas em feixes pares segmentares***
- 8. *Cabeça com prostômio pré-segmentar e peristômio***
9. Dióicos (gonocóricos) ou monóicos (hermafroditas)
10. Larva trocófora

Crescimento teloblástico



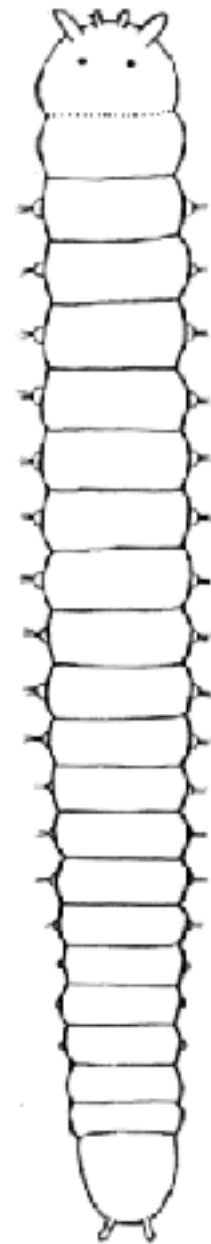
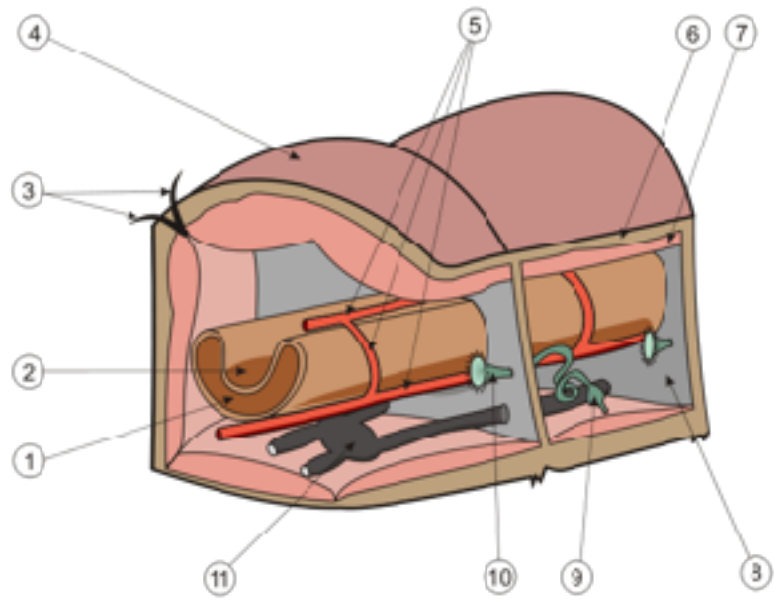
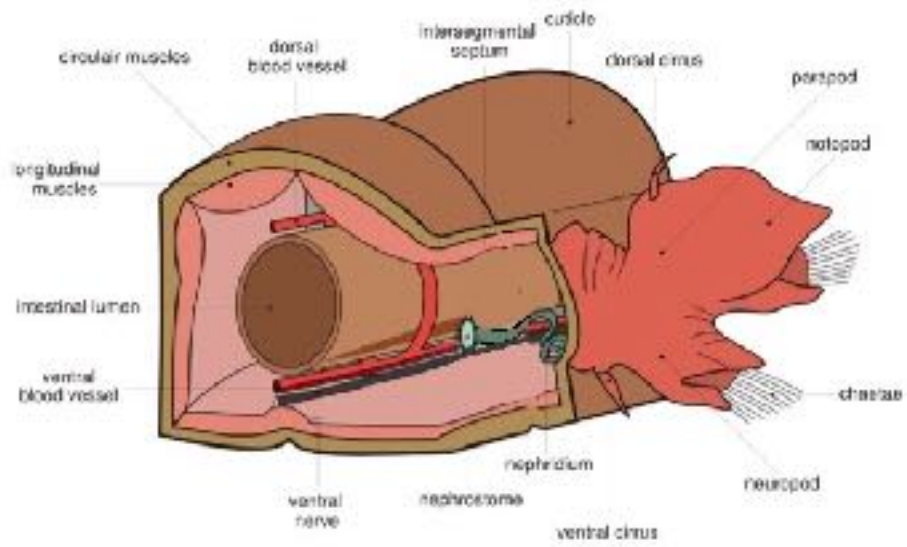
1. Vermes segmentados bilaterais e esquizocélicos
2. Segmentos surgem por crescimento teloblástico
3. Trato digestivo completo
4. Sistema circulatório fechado
5. Sistema nervoso ventral bem desenvolvido
6. Metanefrídeos e protonefrídeos
- 7. *Cerdas em feixes pares segmentares***
- 8. *Cabeça com prostômio pré-segmentar e peristômio***
9. Dióicos (gonocóricos) ou monóicos (hermafroditas)
10. Larva trocófora



PROSTÔMIO

PERISTÔMIO

PIGÍDIO



CLASSE CLITELLATA SUB-CLASSE OLIGOCHAETA

CLASSIFICAÇÃO

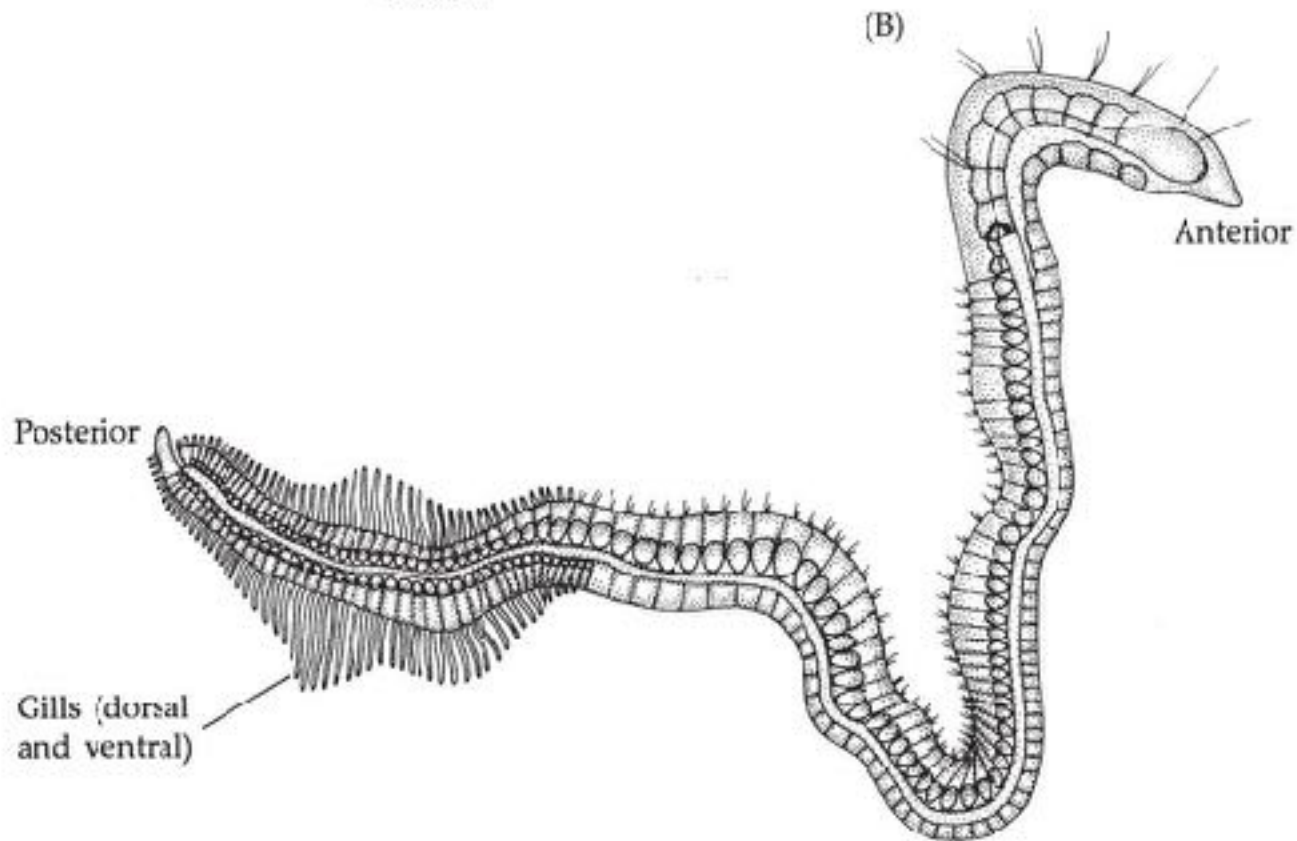
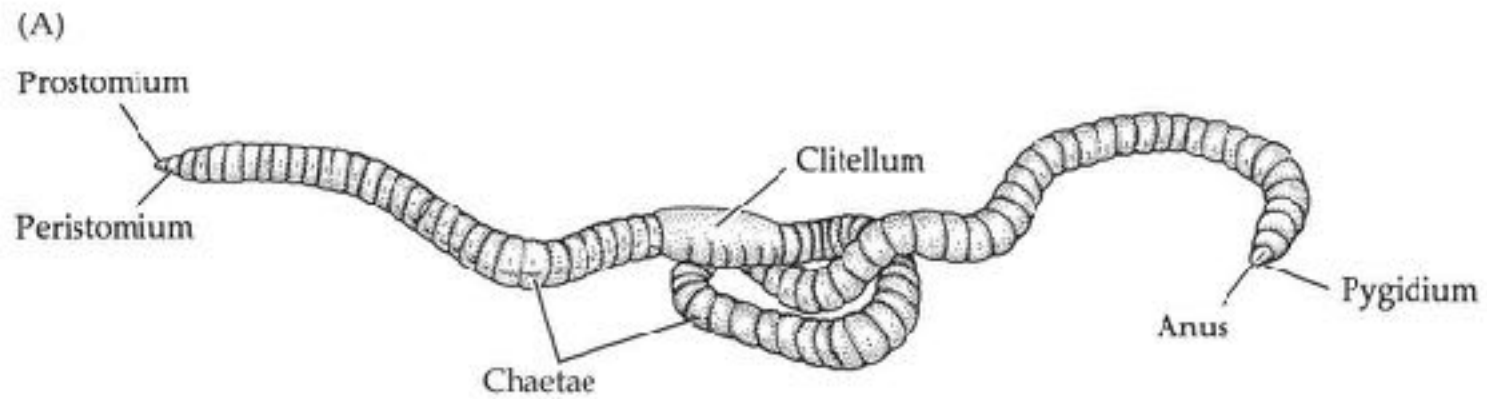
Ordem Lumbriculida
Ordem Haplotaxida
Ordem Moniligastrida

CARACTERÍSTICAS

Sem parapódios
Poucas cerdas
Clitelo
Metameria presente
Celoma espaçoso



Annelida Oligochaeta



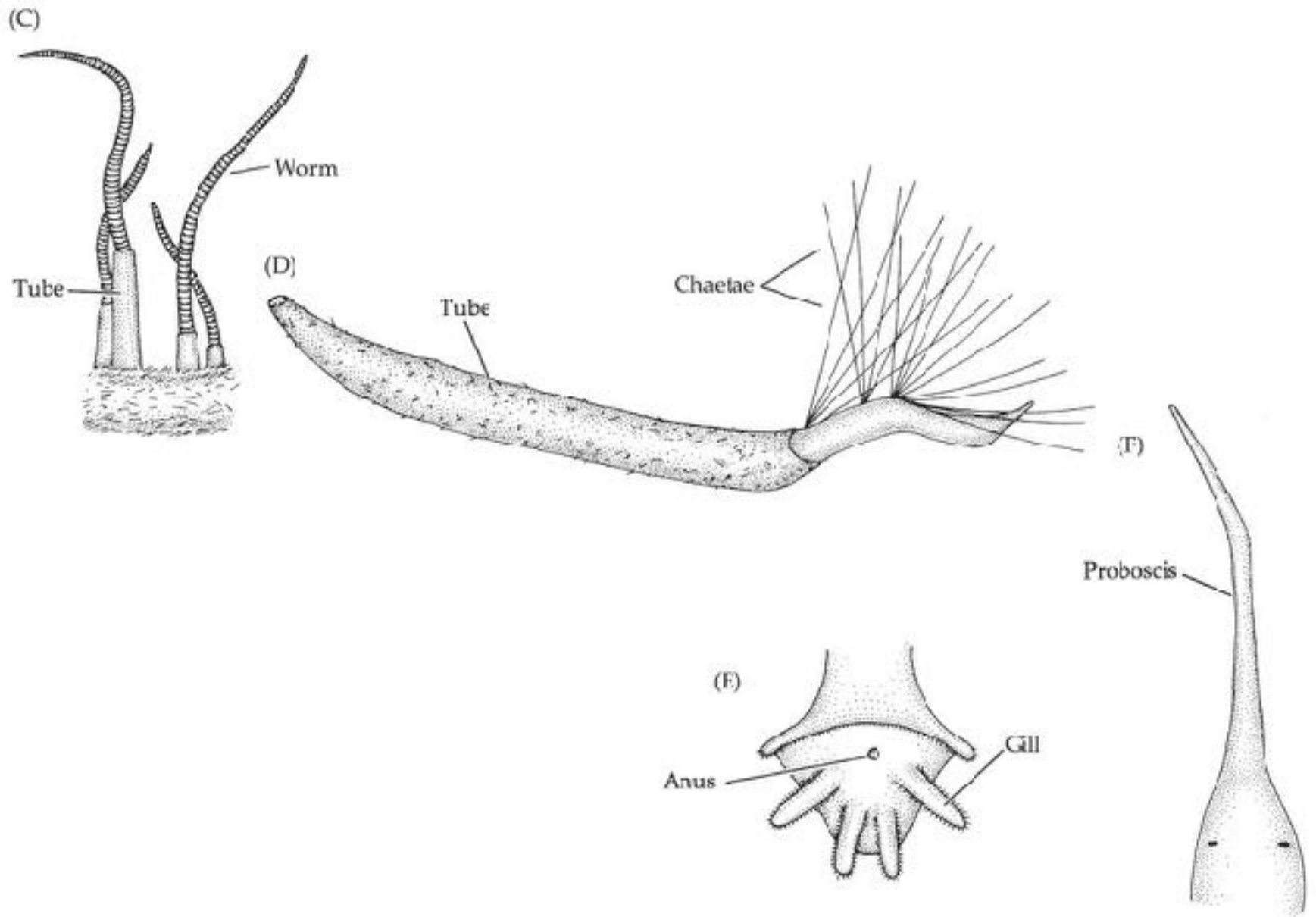




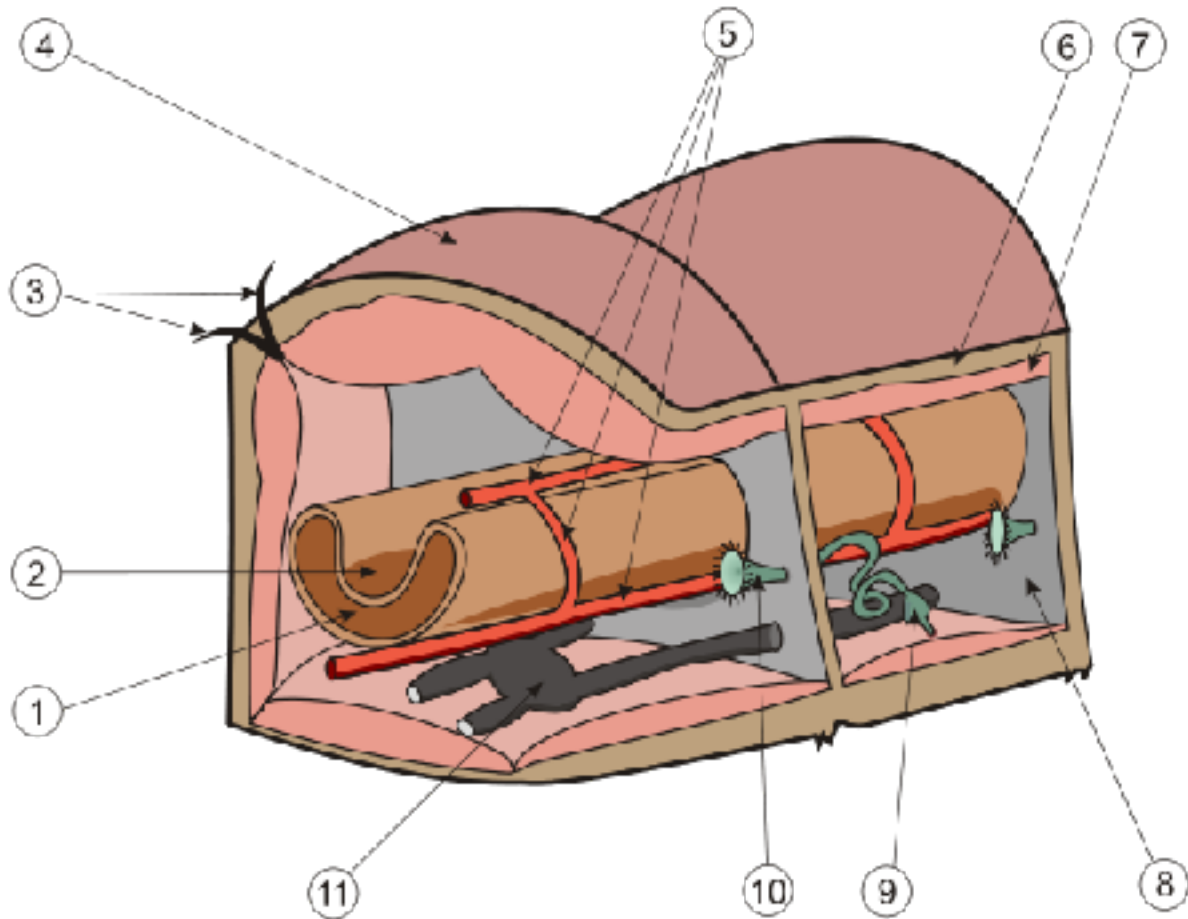




© Oliver Lucanus



Annelida Oligochaeta



CLASSE CLITELLATA SUB-CLASSE OLIGOCHAETA

CARACTERÍSTICAS

Ambientes:

dulciaquícolas - lagos e rios

terrestres - solos

marinho – sedimentos costeiros

Tamanho – < 0,5 mm até 2 m



IMPORTÂNCIA ECONÔMICA

Agricultura – retrabalhamento do solo

Produção de húmus (adubo)

Pesca – extrativismo e produção

Oligochaeta: importância ecológica e econômica



CLASSE CLITELLATA SUB-CLASSE HIRUDINIDA

CLASSIFICAÇÃO

Acanthobdellida
Branchiobdellida
Hirudinea



CARACTERÍSTICAS

Sem parapódios

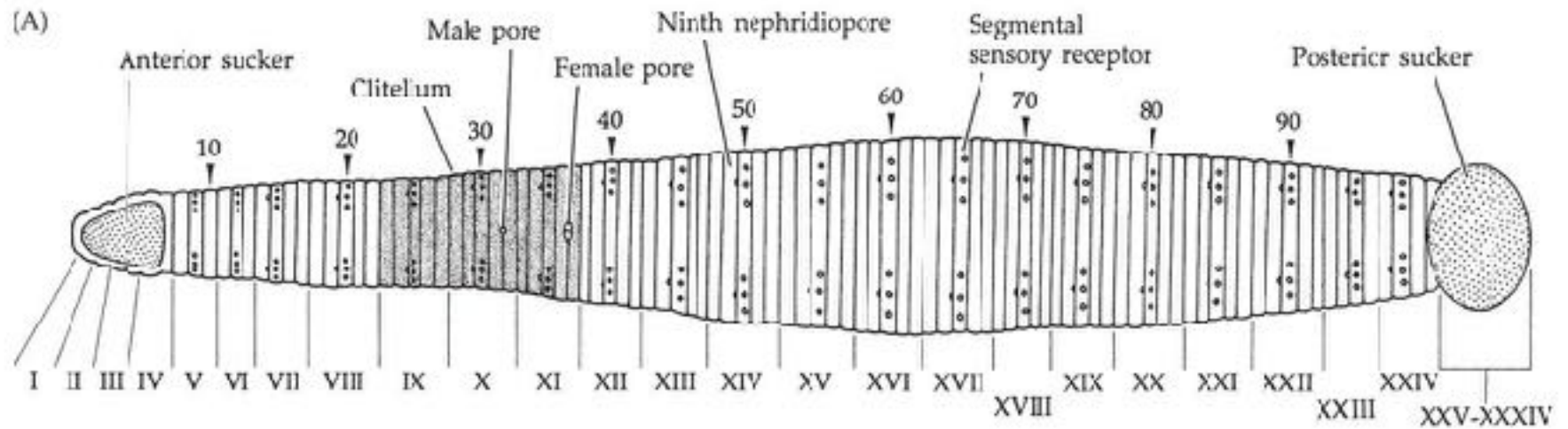
Sem cerdas

Metameria secundária externa

Ca. de 50% Ectoparasitas

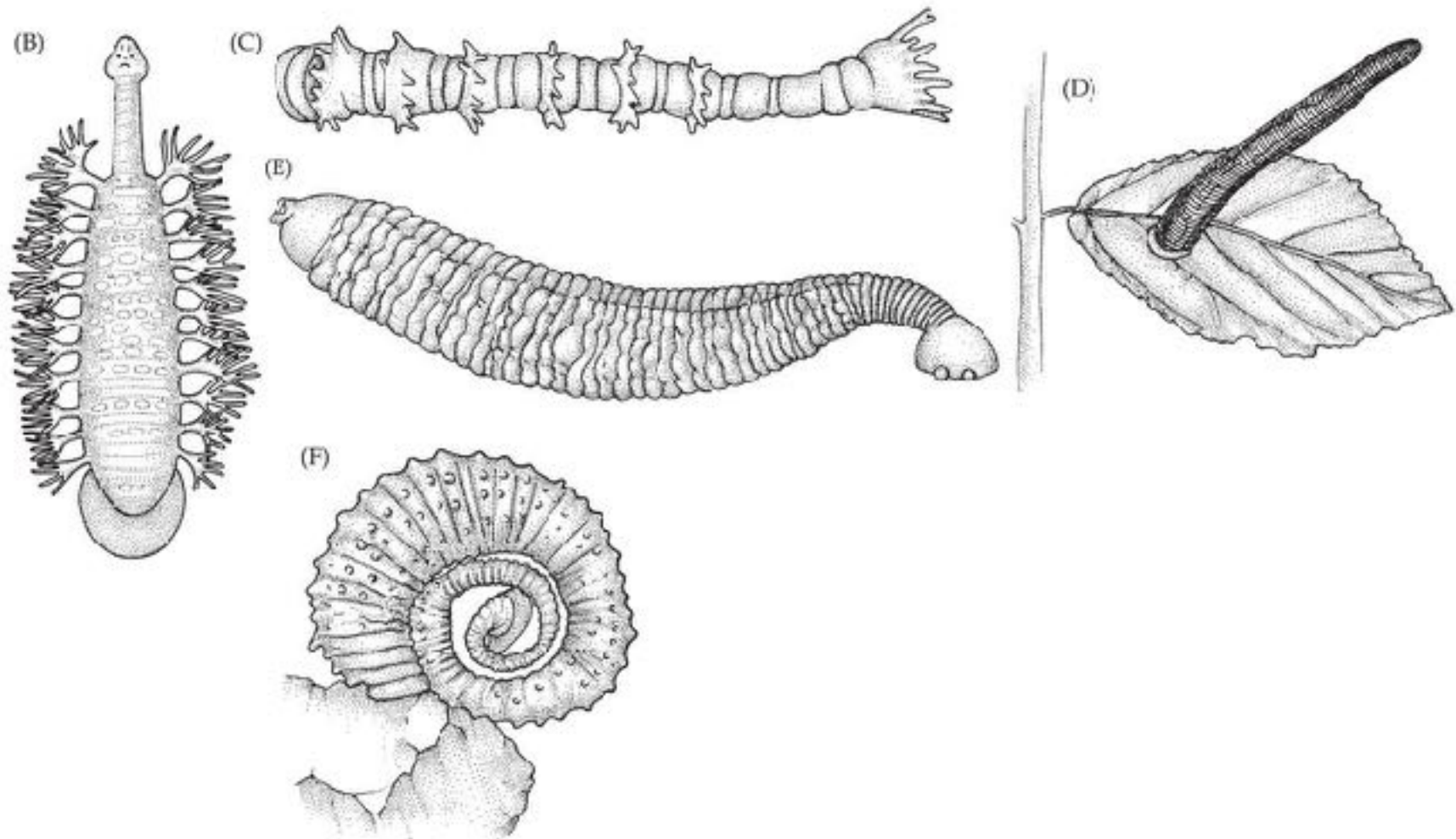
Celoma parcialmente invadido por tecido

Ventosas









CLASSE CLITELLATA SUB-CLASSE HIRUDINIDA

CARACTERÍSTICAS

Ambientes:

dulciaquícolas - lagos e remansos de rios

terrestres - florestas tropicais úmidas

marinho – peixes cartilagosos (ectoparasitas)

Tamanho – < 0,5 mm até 50 cm



IMPORTÂNCIA ECONÔMICA

Cirurgias plásticas e cicatrização

Pesquisa médica – anti-coagulantes

Hirudo medicinalis





Hirudo medicinalis



CLASSE POLYCHAETA

CLASSIFICAÇÃO

“Errantia”

“Sedentaria”



CARACTERÍSTICAS

Parapódios

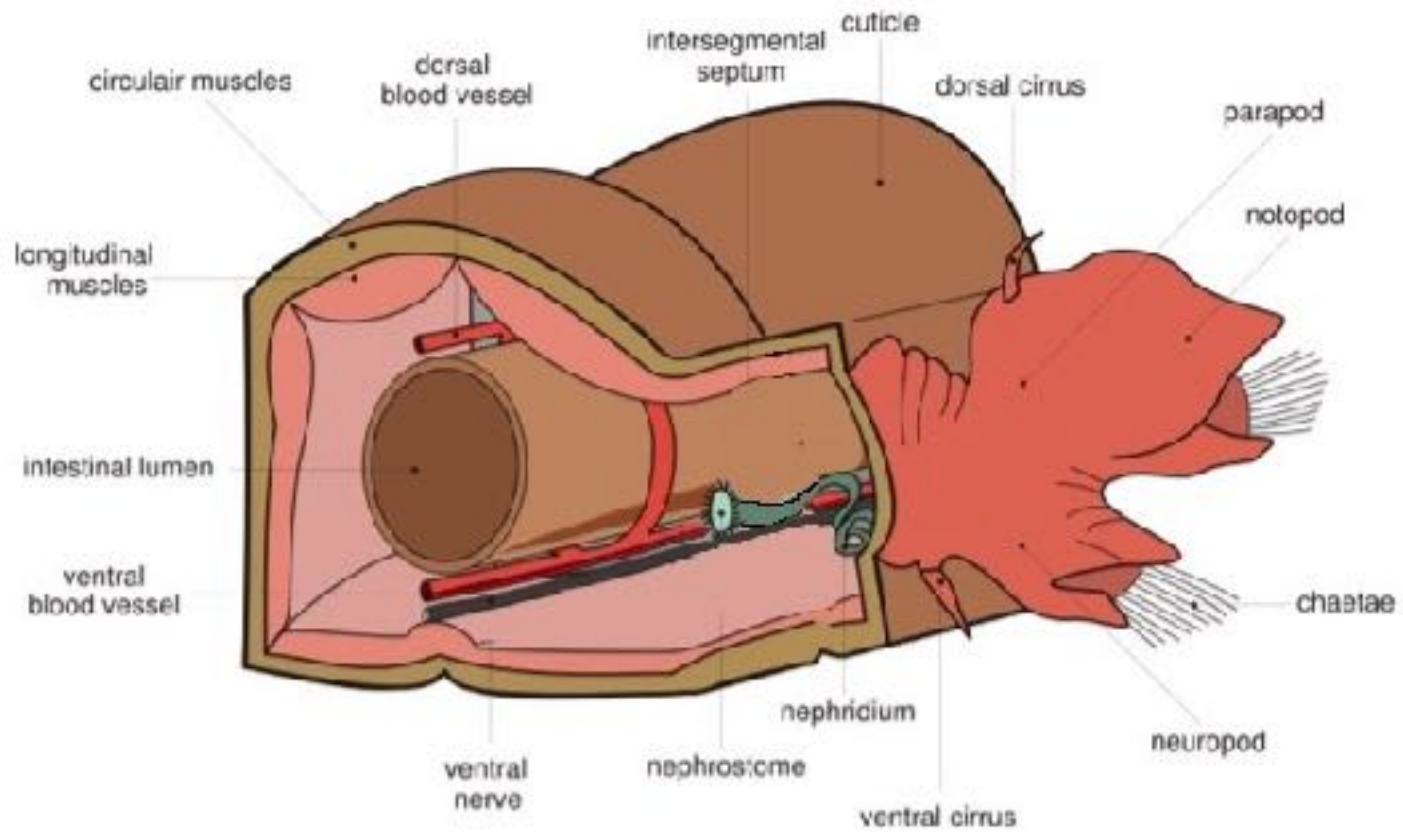
Muitas cerdas

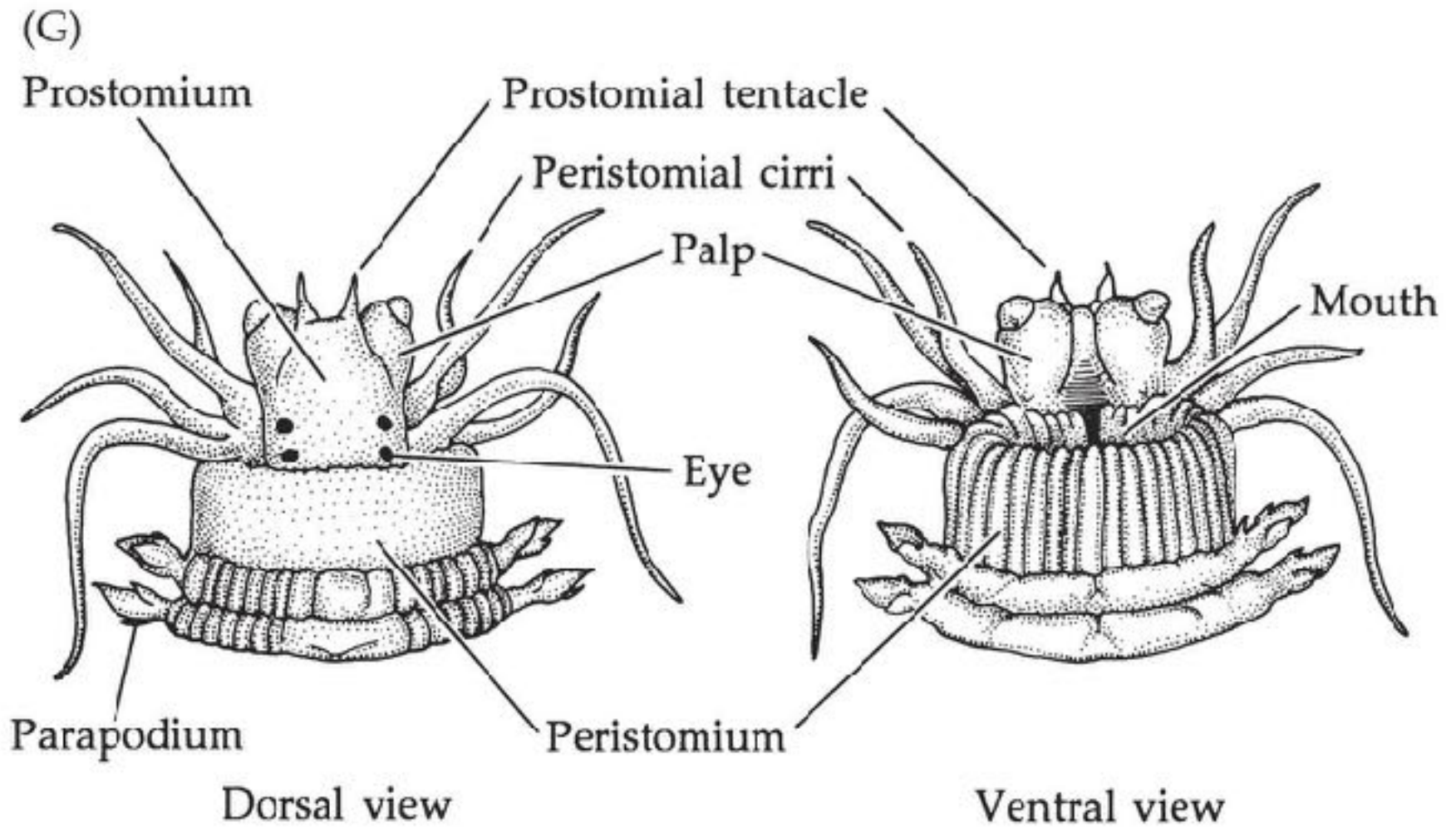
Sem clitelo

Perda da metameria interna

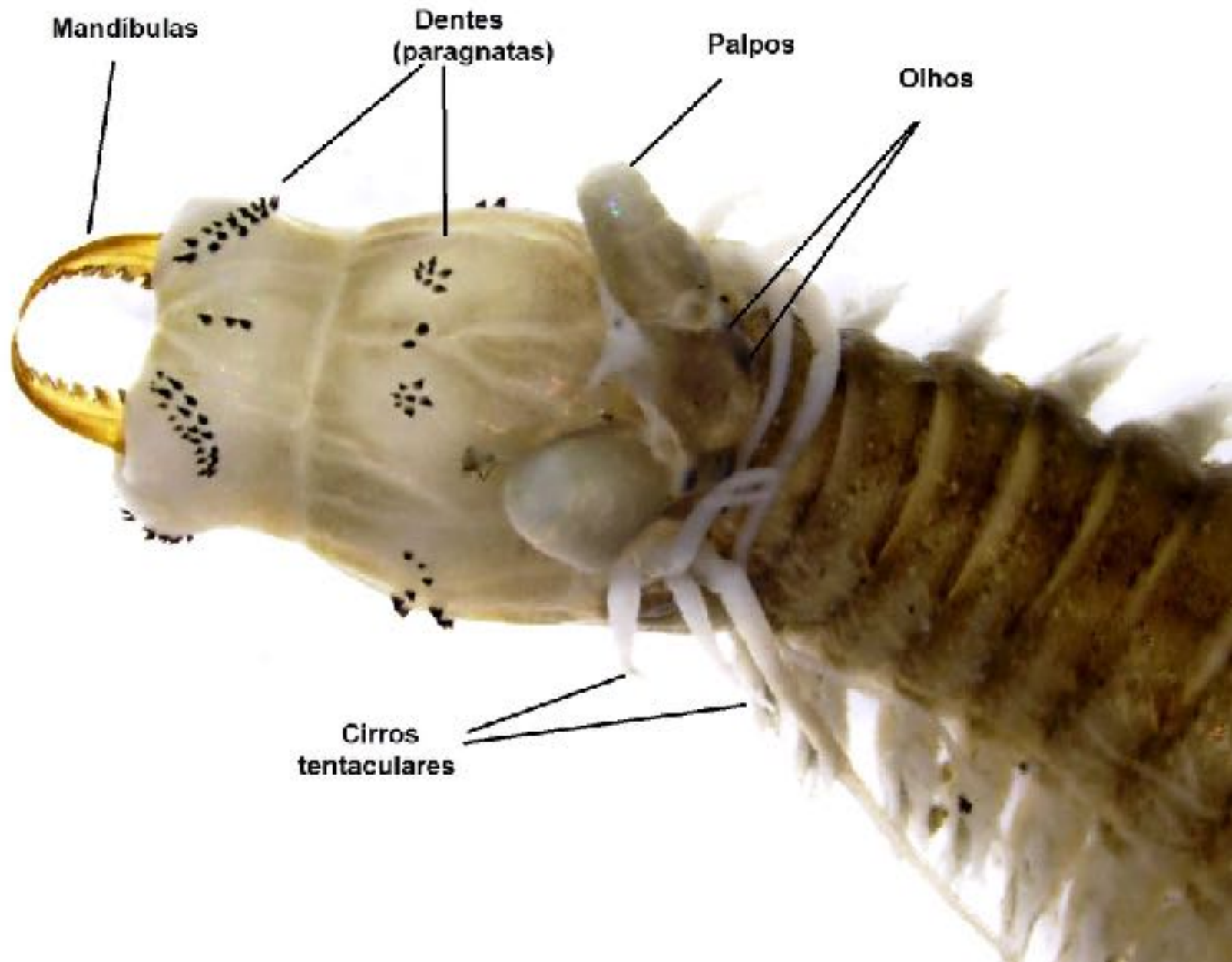
Redução do celoma em vários casos

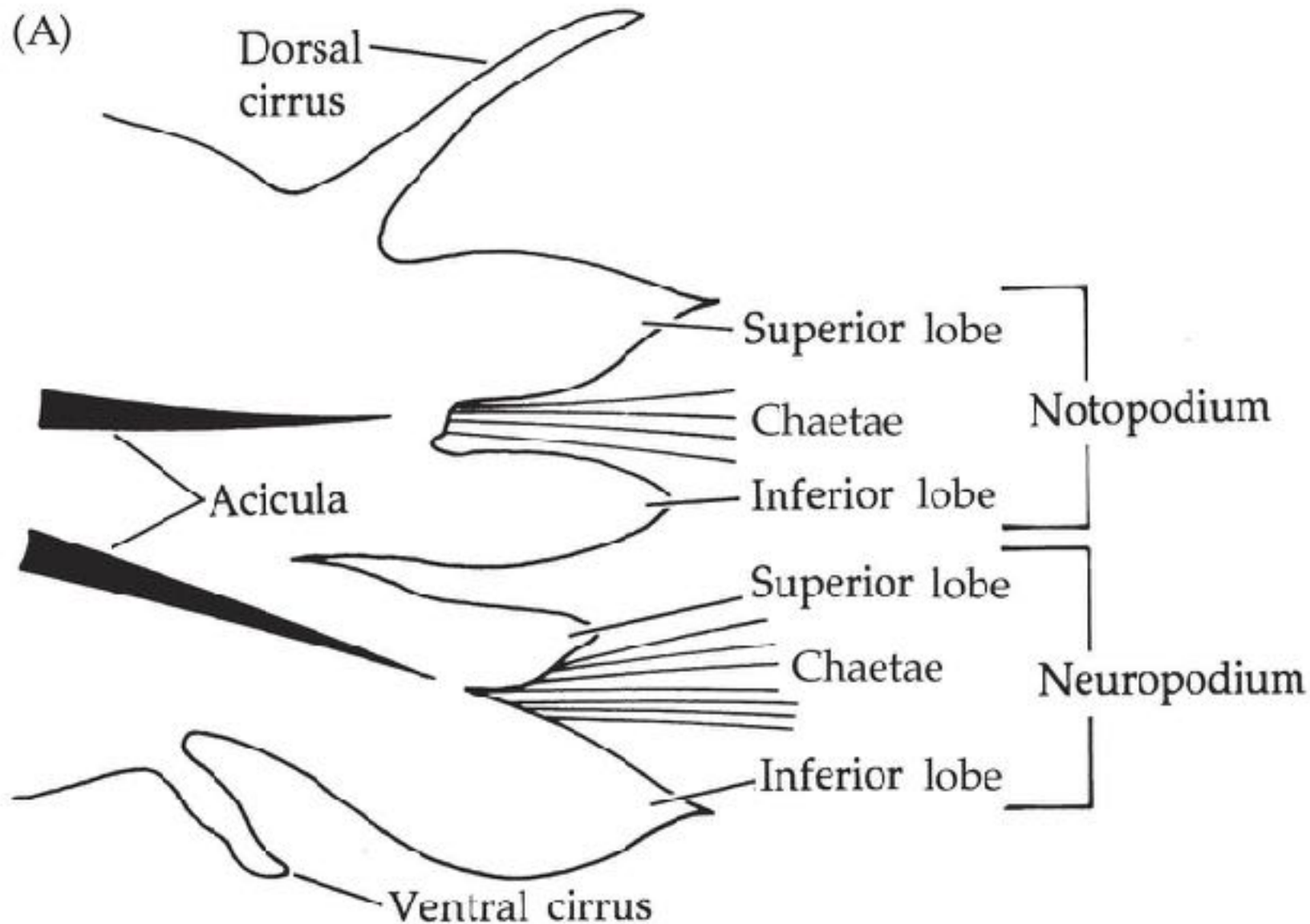
Polychaeta



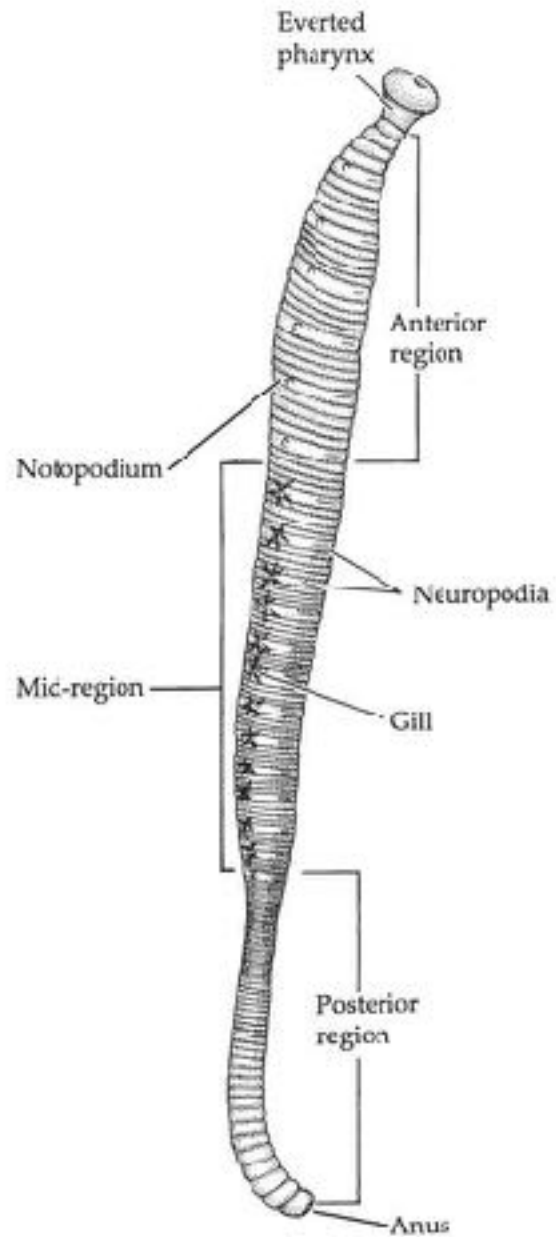


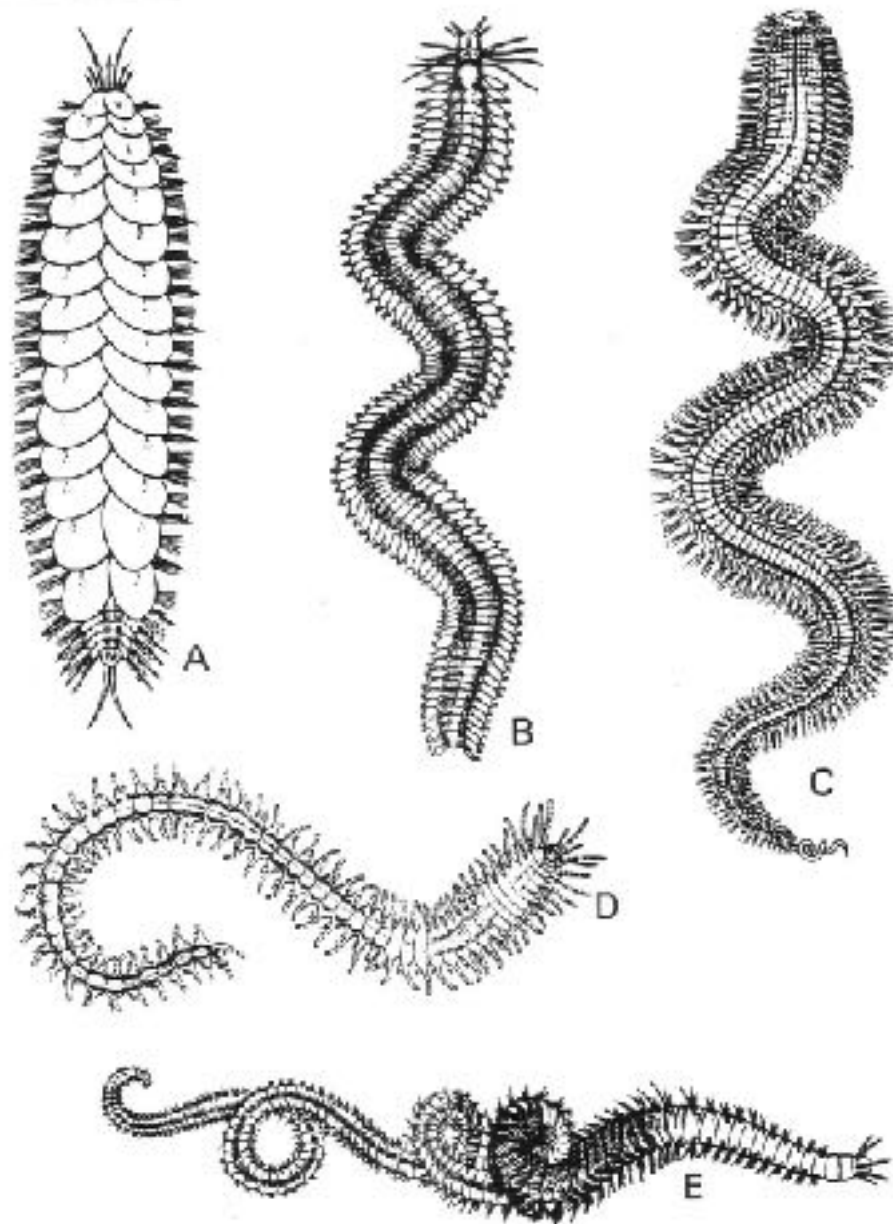
Annelida Polychaeta





Annelida Polychaeta













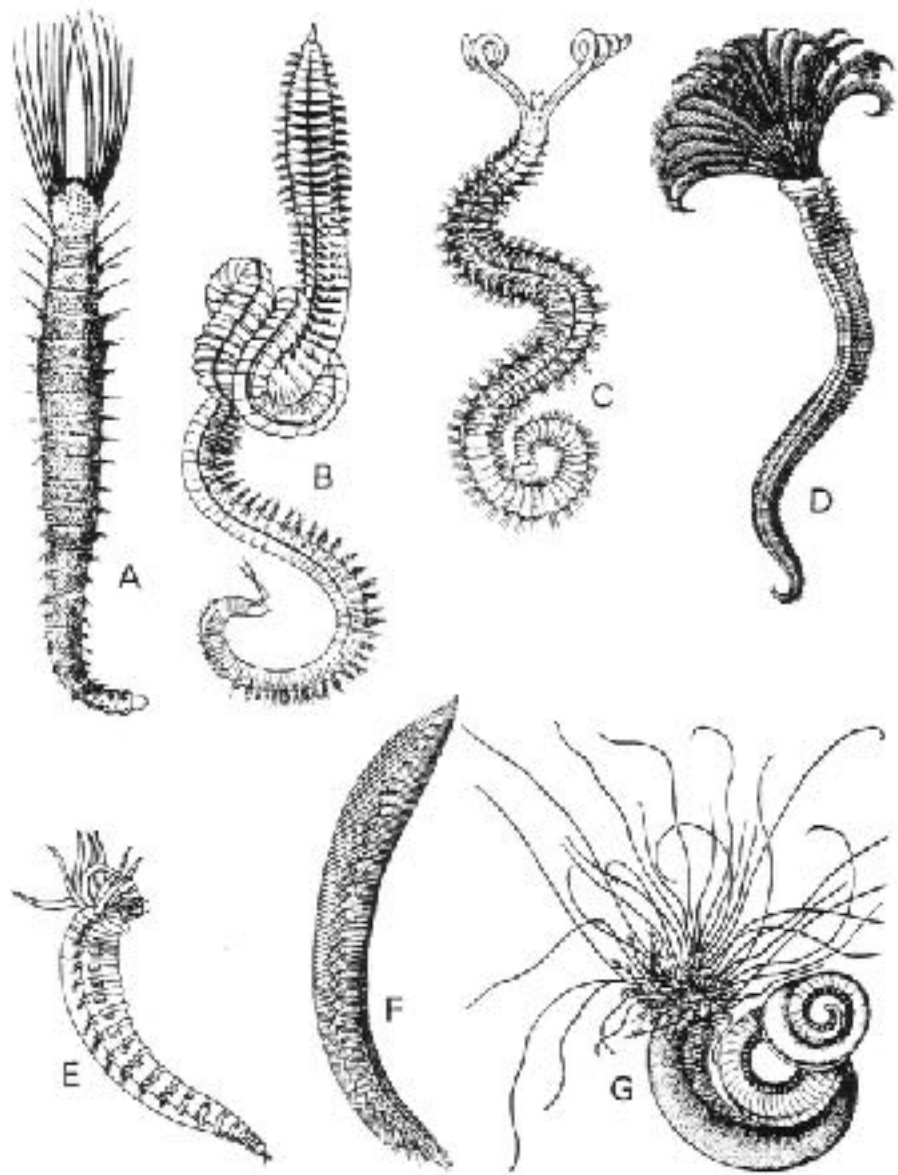


Hesione picta





Polychaeta: Sedentários









Thelepus crispus



A polychaete worm







CLASSE POLYCHAETA

CARACTERÍSTICAS

Ambientes:

marinho – todos os ecossistemas (praias, estuários, plataformas, mar profundo, recifes de corais, bentos & plâncton)

dulciaquícolas - sedimentos

Tamanho – < 0,5 mm até 2m



IMPORTÂNCIA ECOLÓGICA E ECONÔMICA

Cadeias alimentares no ambiente marinho

Maricultura – cultivos de camarões

Pesca – isca viva



CLASSE POLYCHAETA

CARACTERÍSTICAS

Ambientes:

marinho – todos os ecossistemas (praias, estuários, plataformas, mar profundo, recifes de corais, bentos & plâncton)

dulciaquícolas - sedimentos

Tamanho – < 0,5 mm até 2m



IMPORTÂNCIA ECOLÓGICA E ECONÔMICA

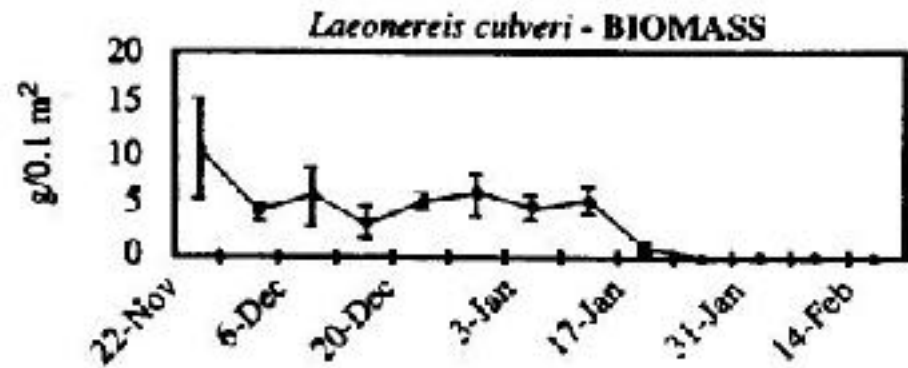
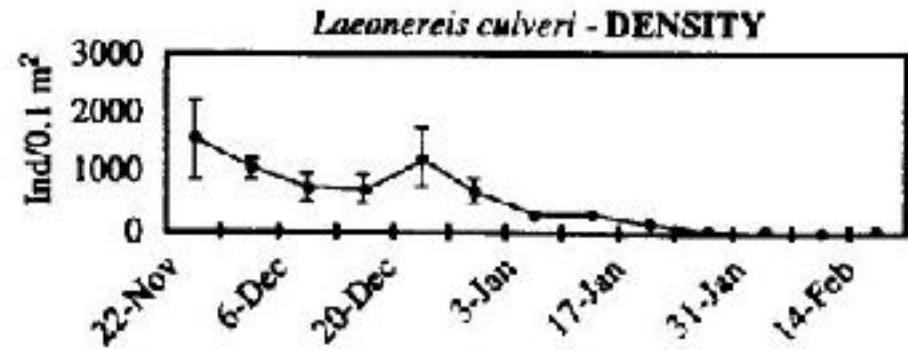
Cadeias alimentares no ambiente marinho

Maricultura – cultivos de camarões

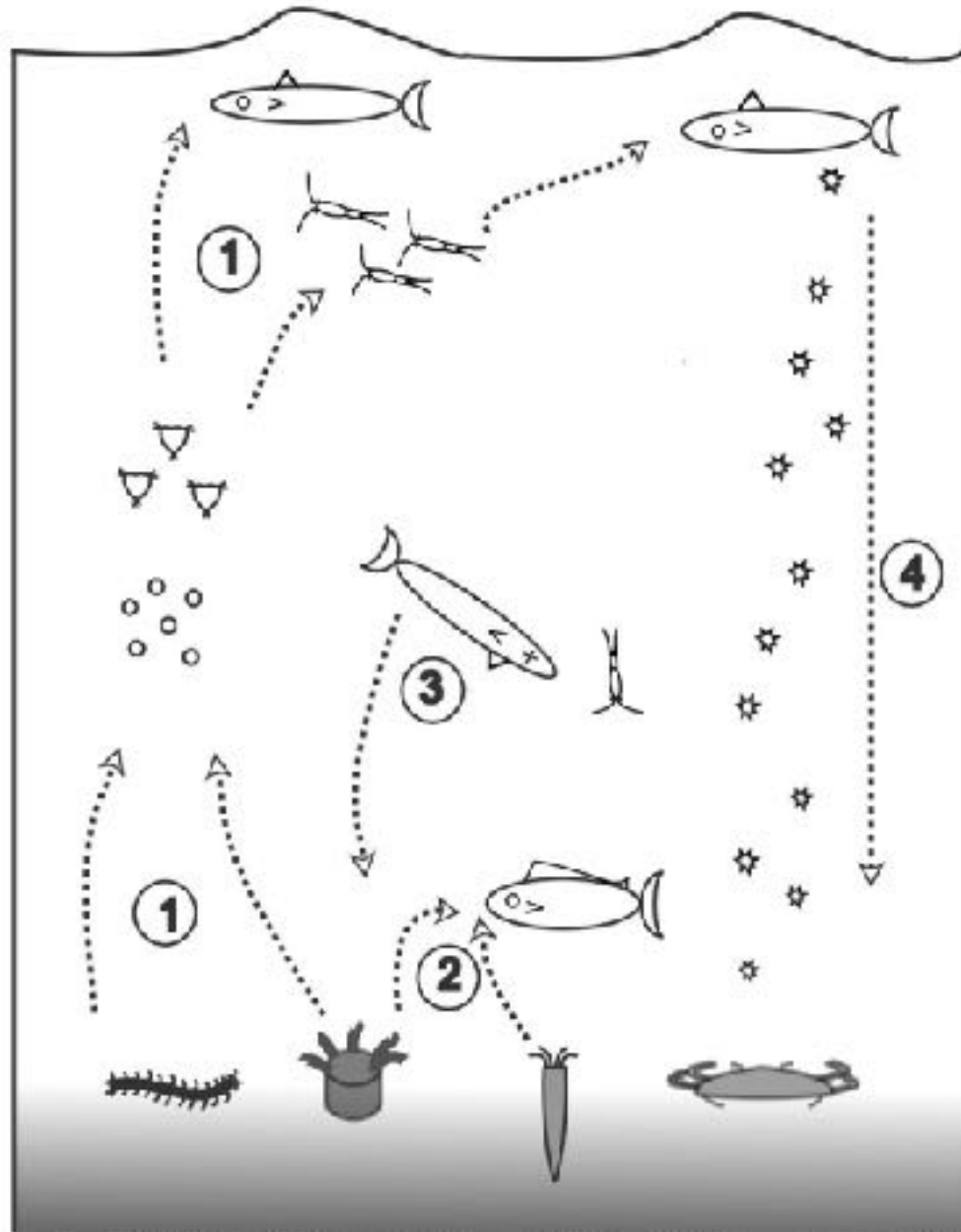
Pesca – isca viva

Polychaeta: Importância ecológica e econômica



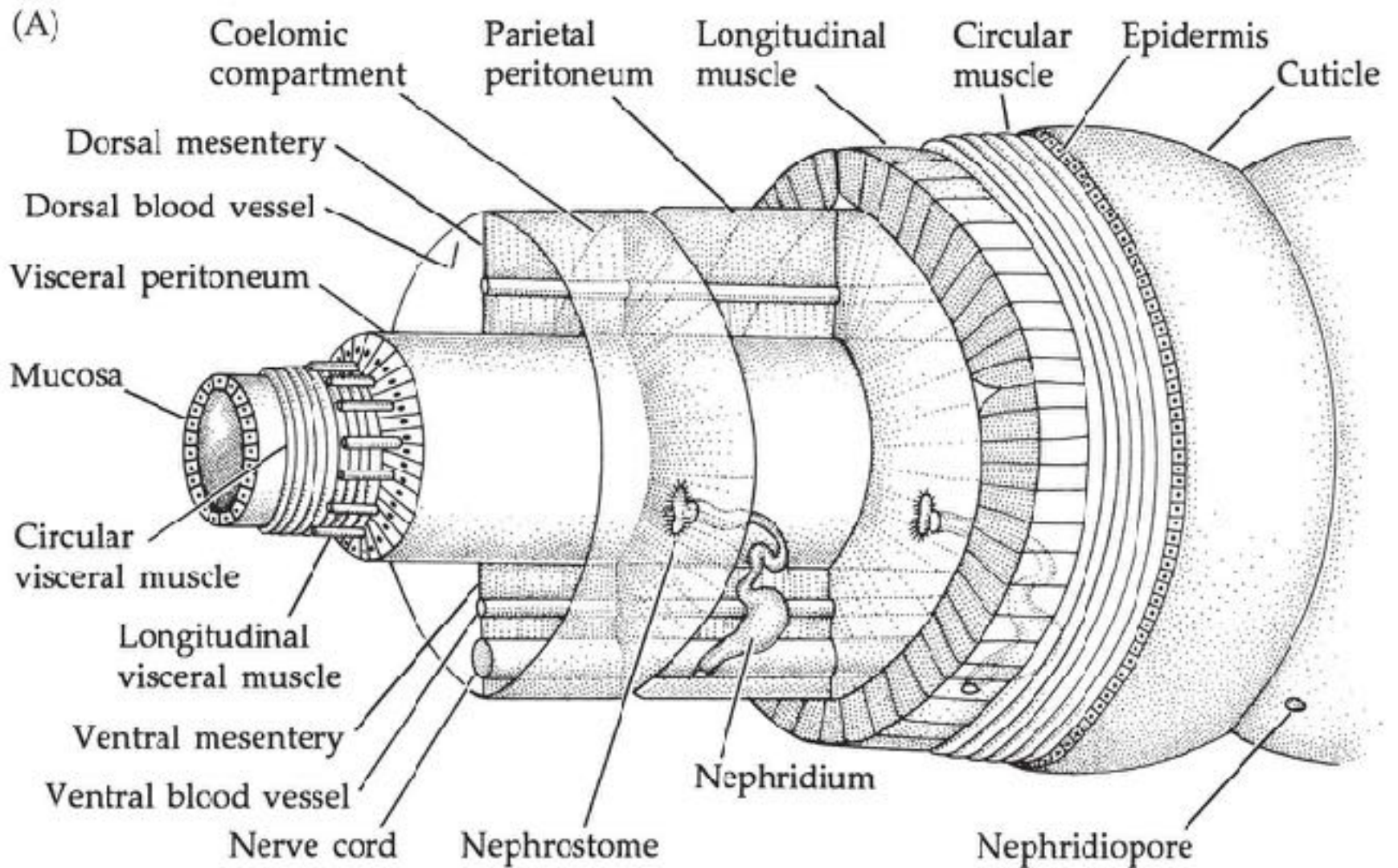


Polychaeta: Importância ecológica e econômica



LOCOMOÇÃO

Parede do corpo de um anelídeo

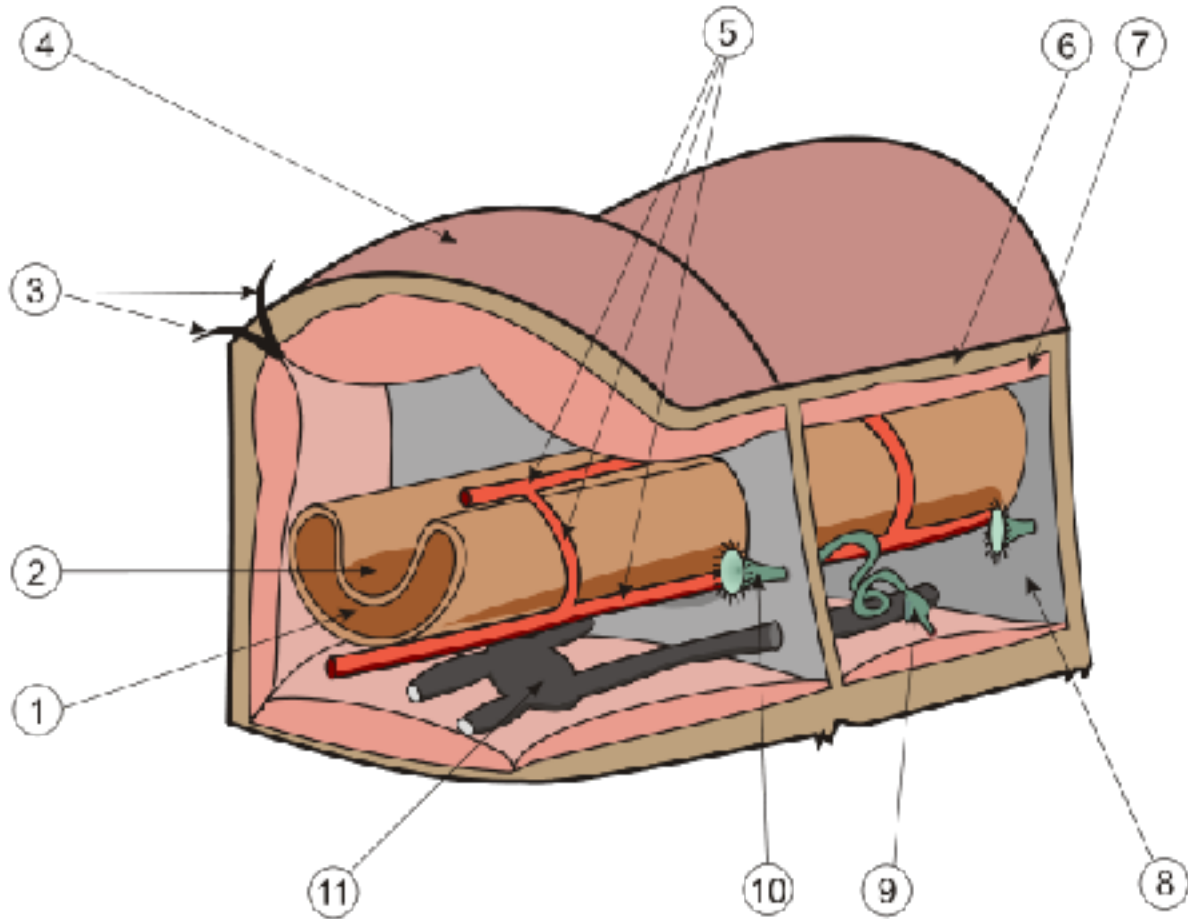


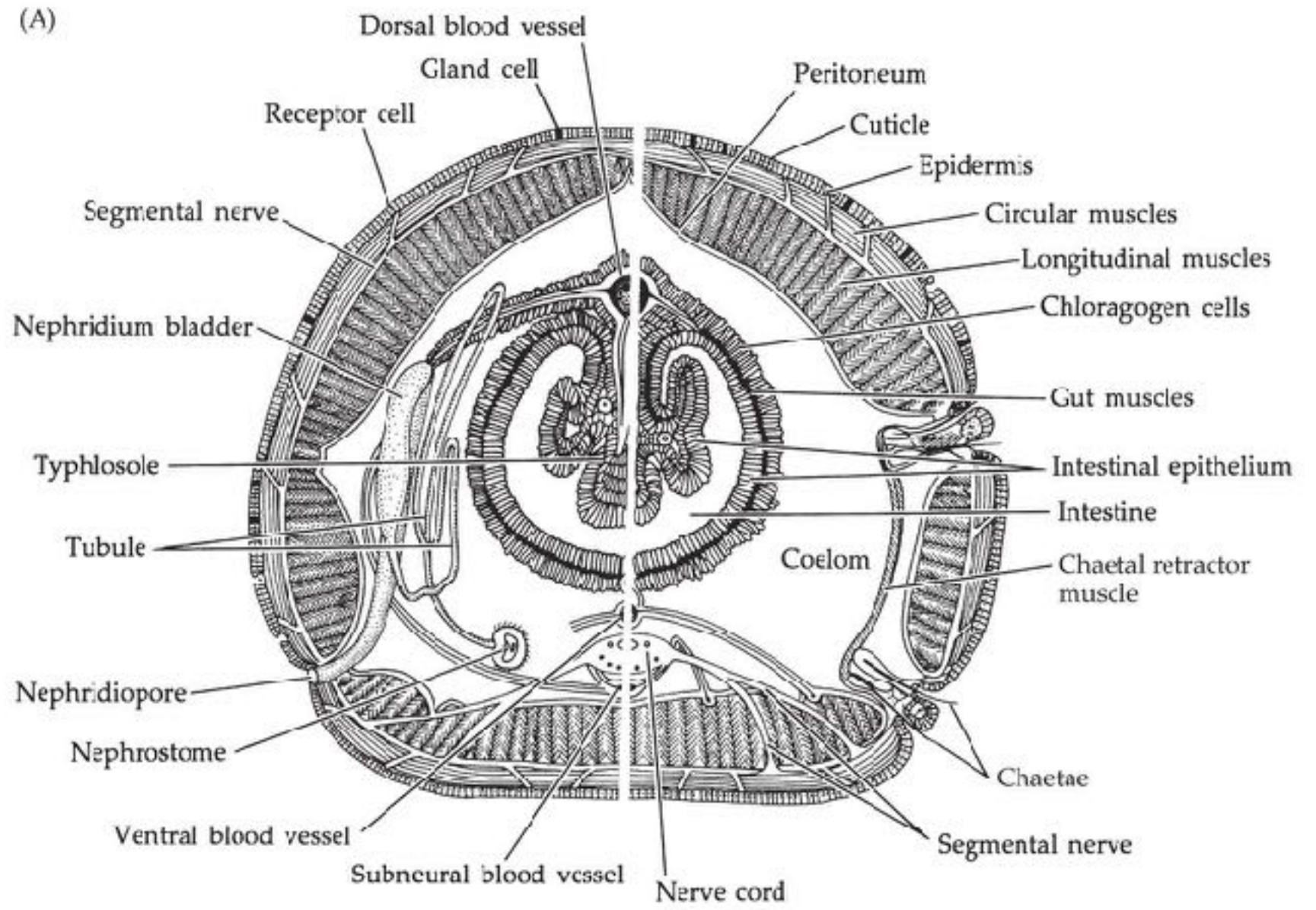
Oligoquetas



Poliquetas sedentários

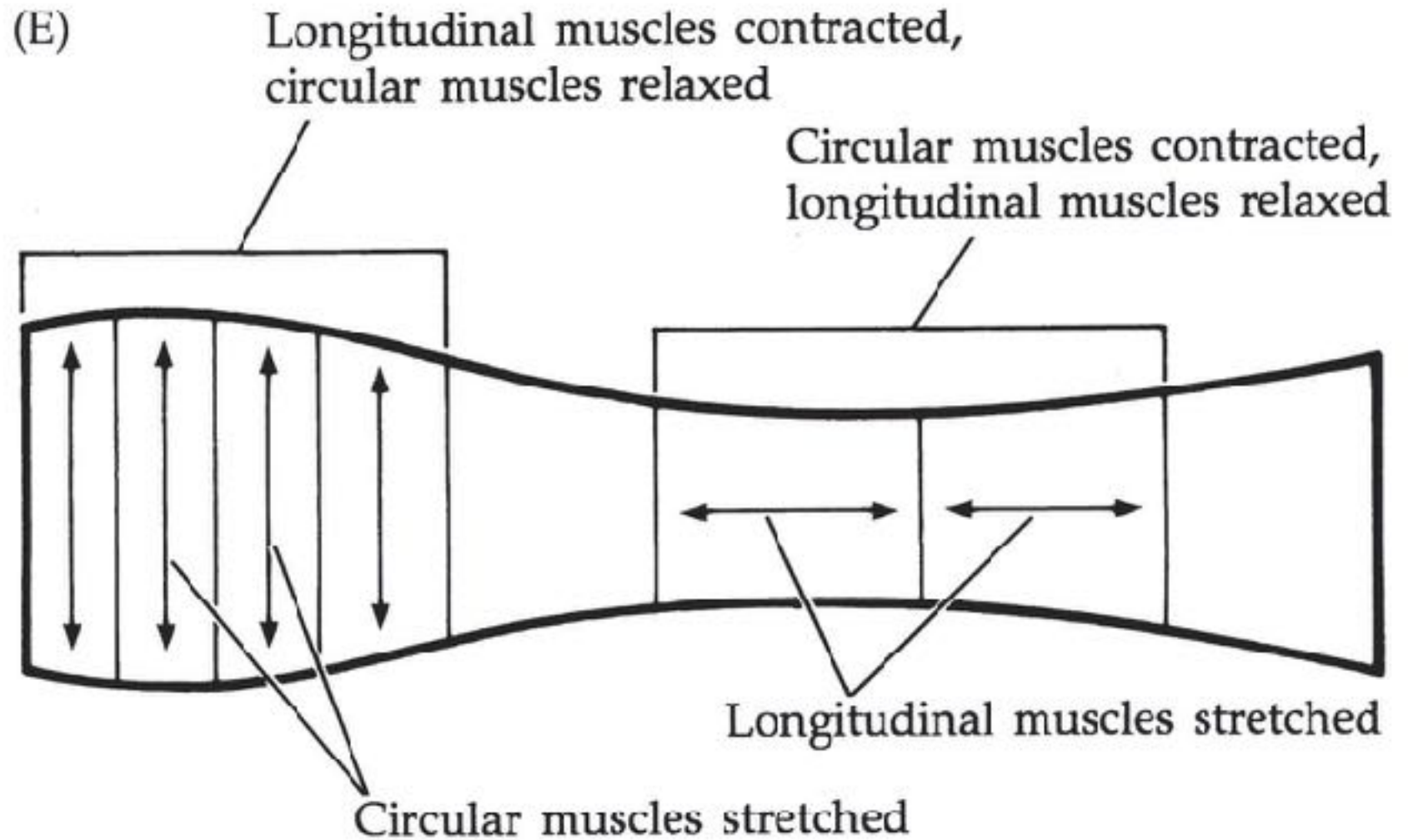


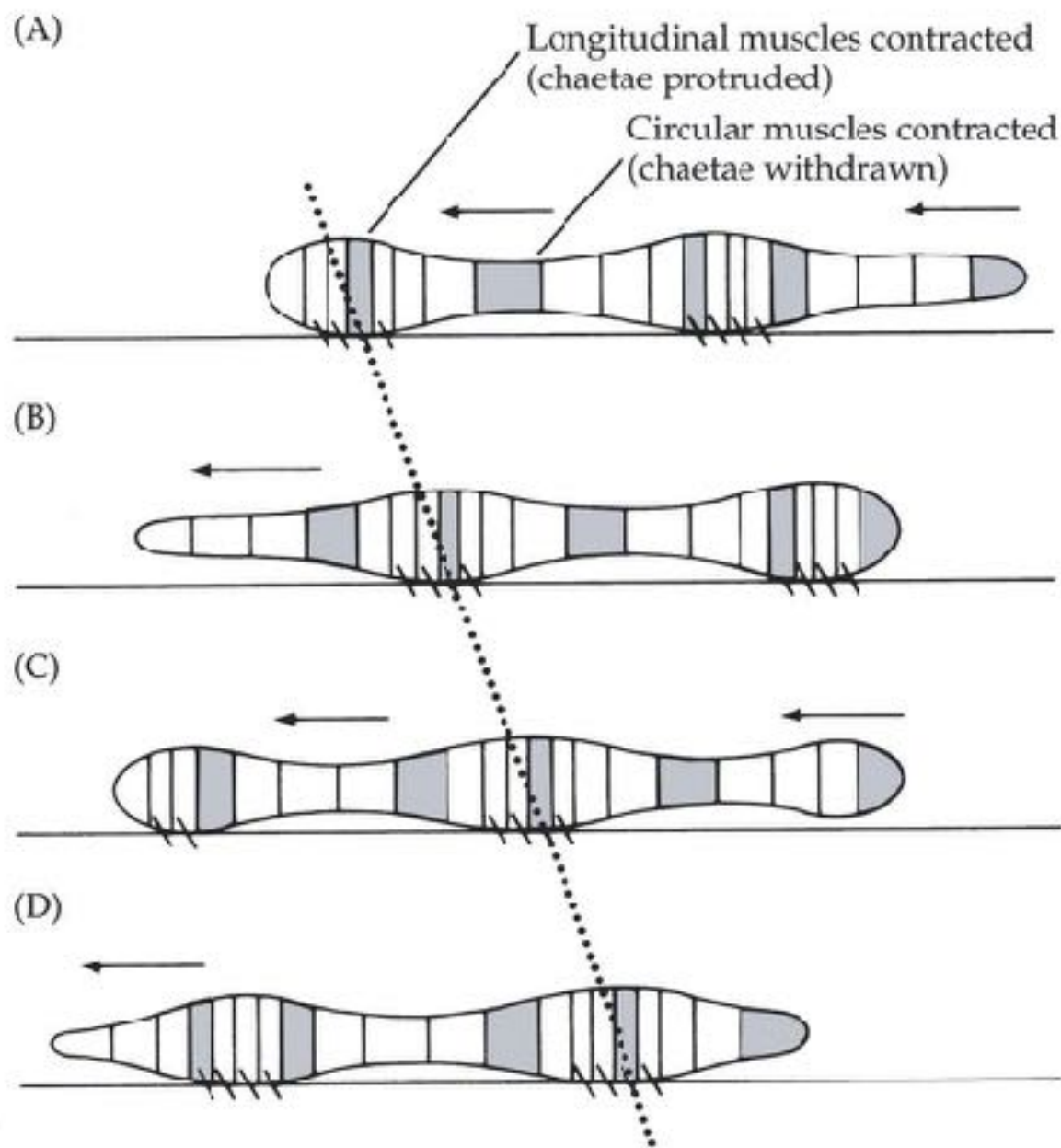


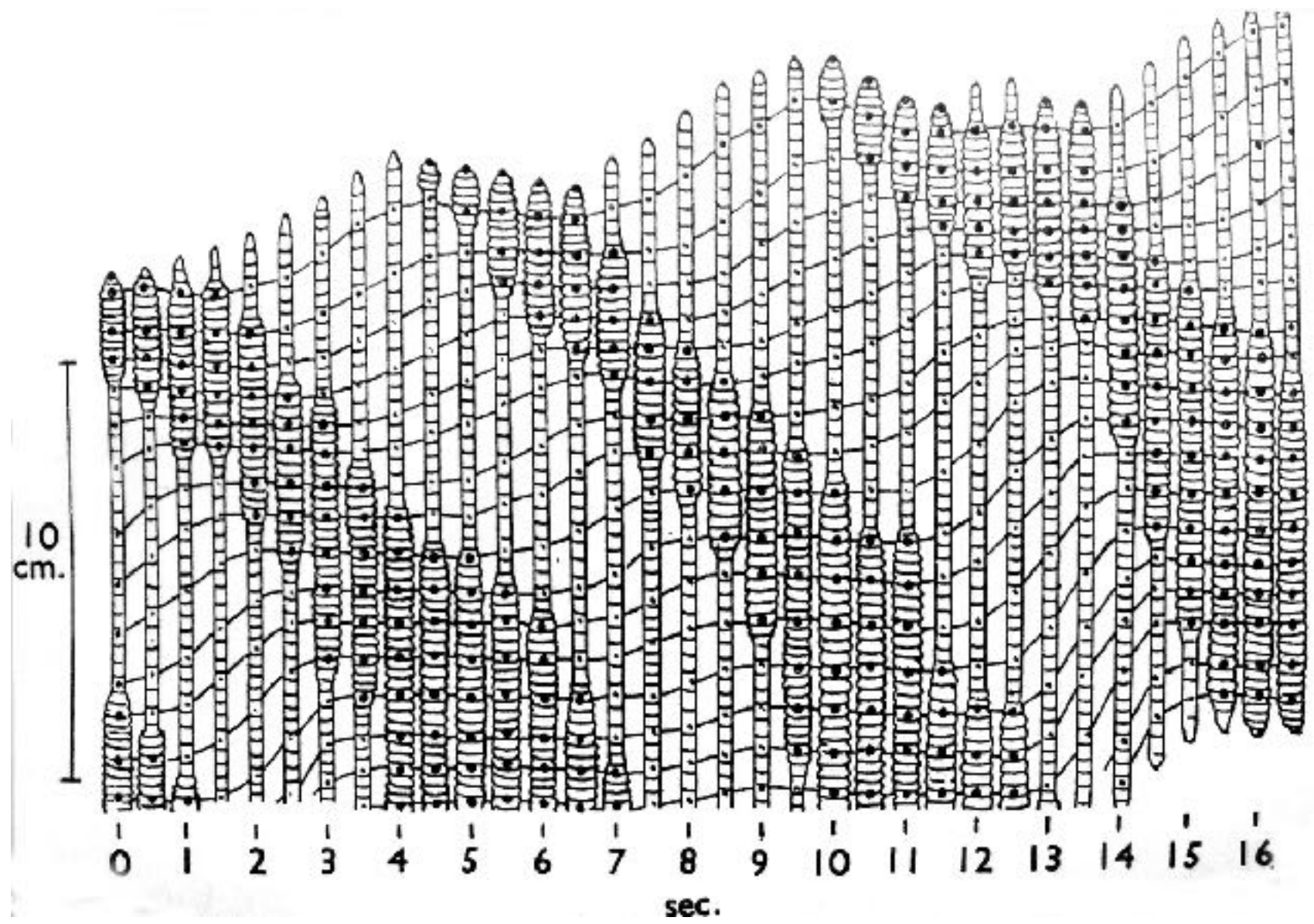


Oligochaetas





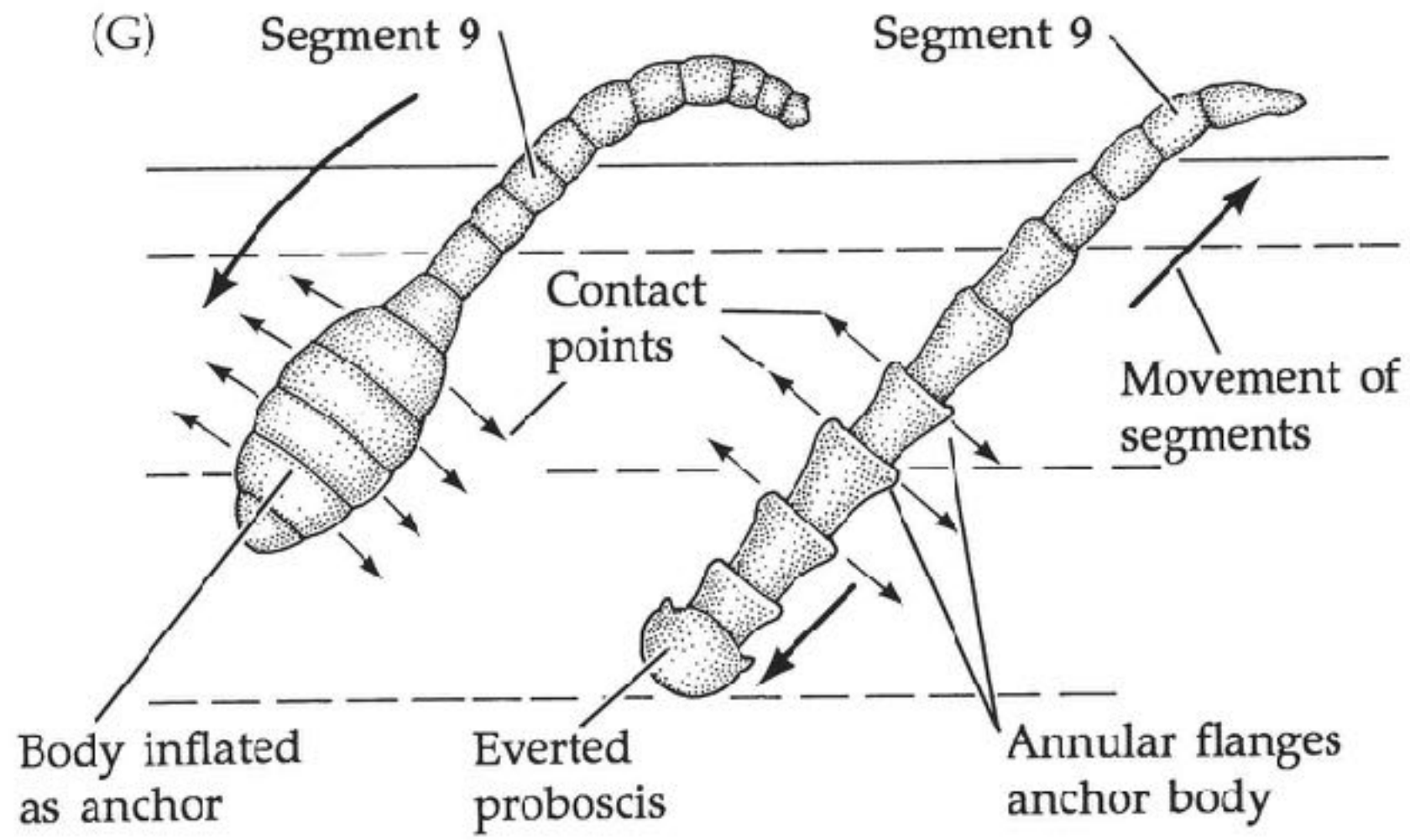




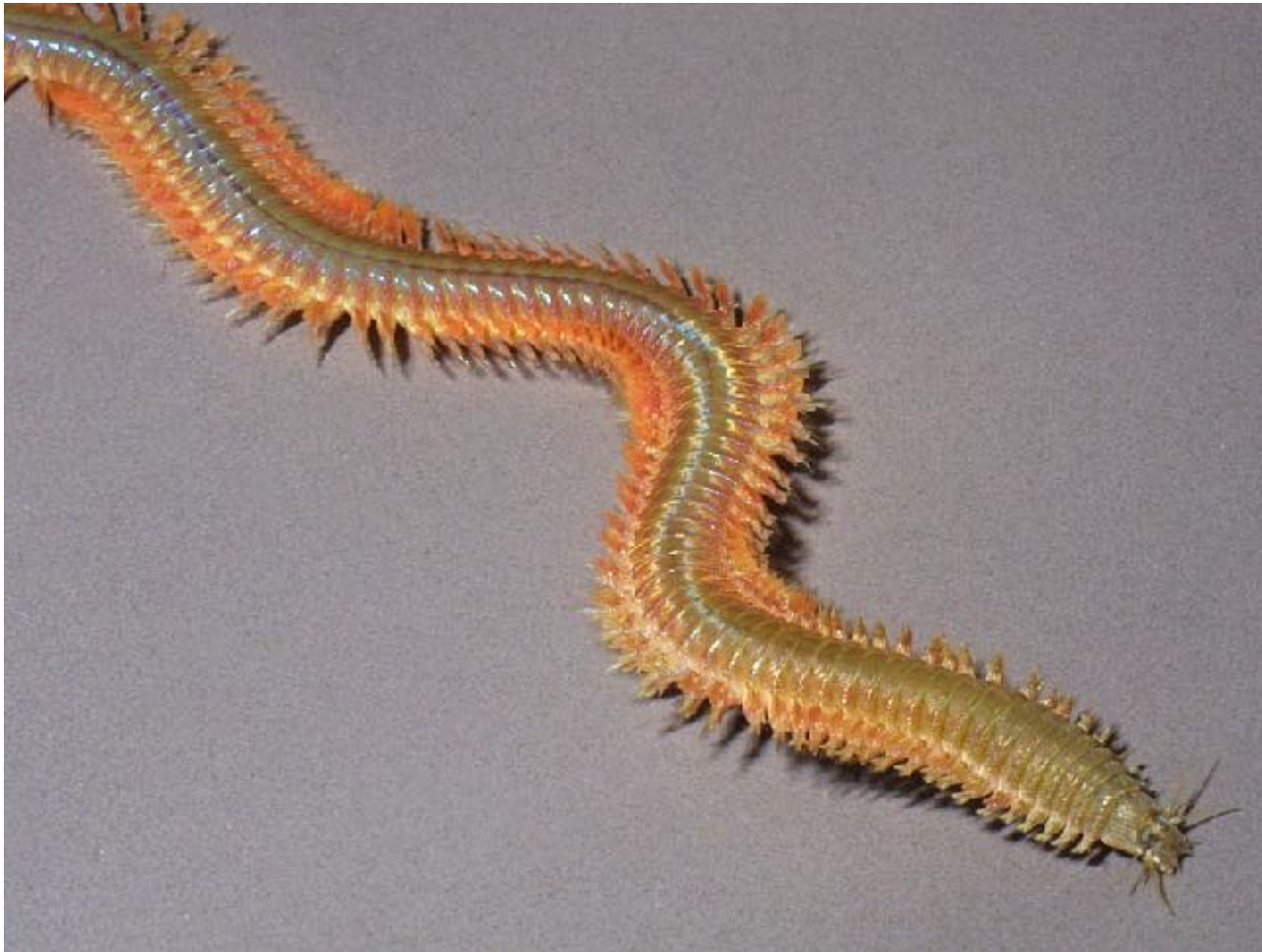


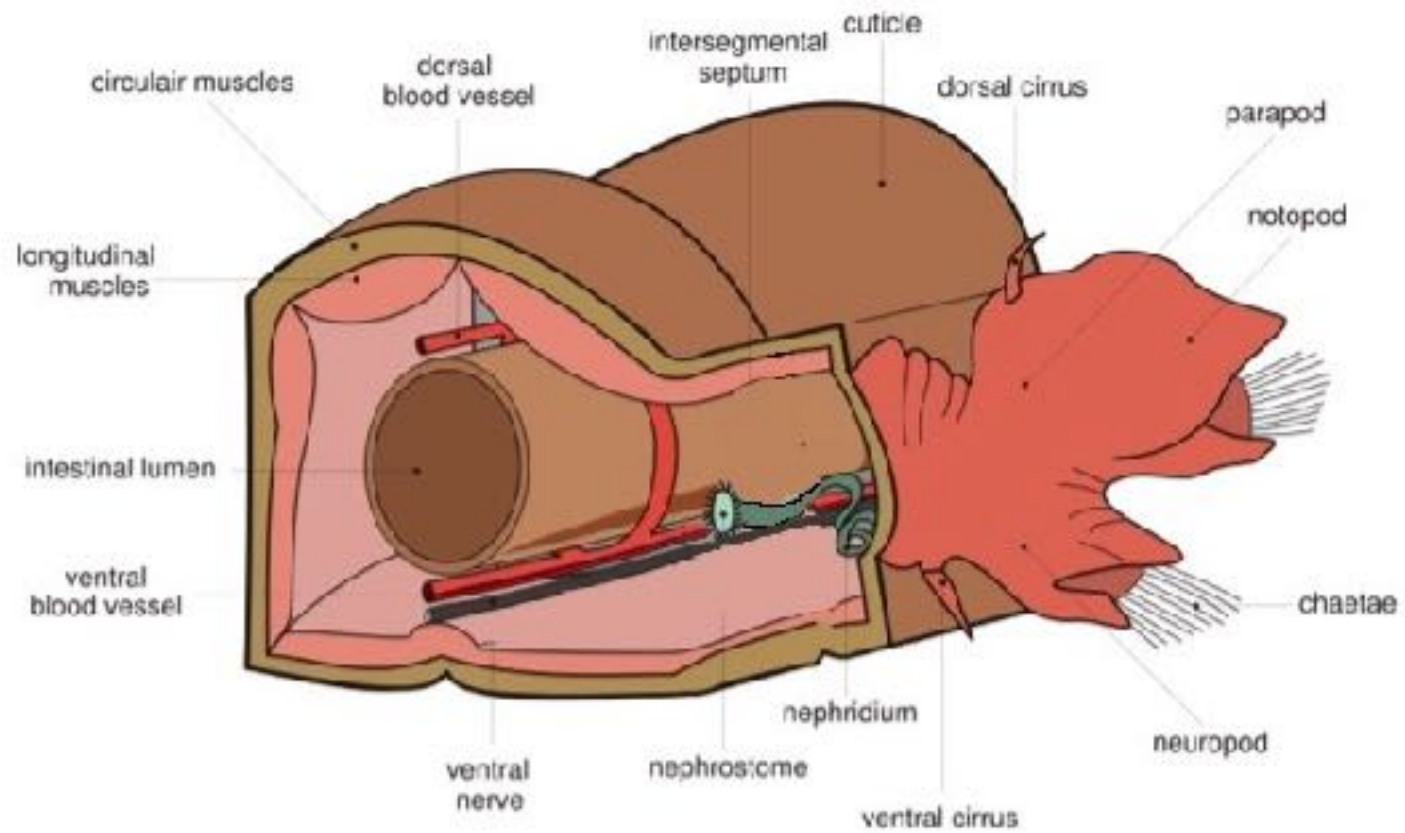
Poliquetas sedentários
(*Arenicola* spp)



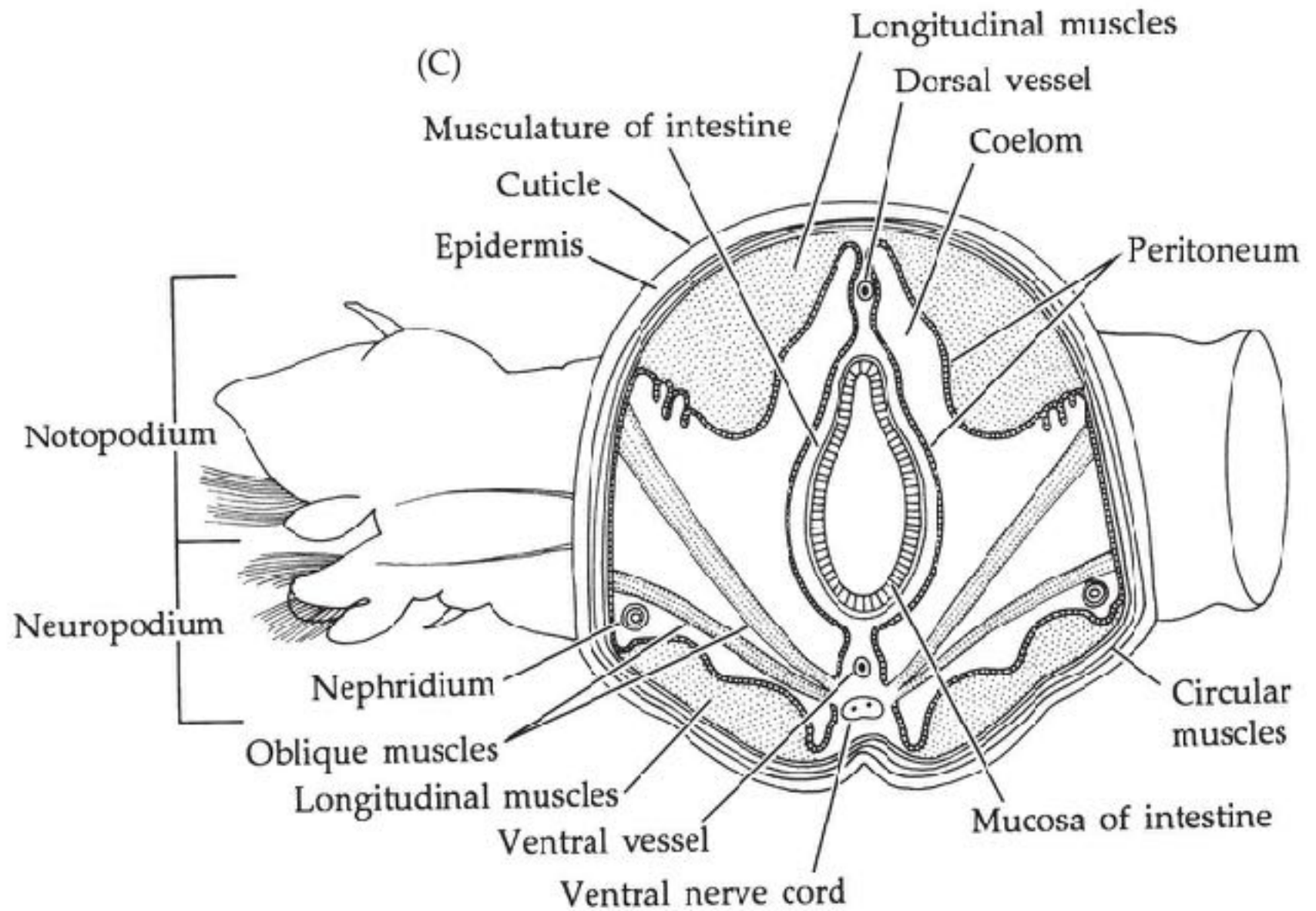


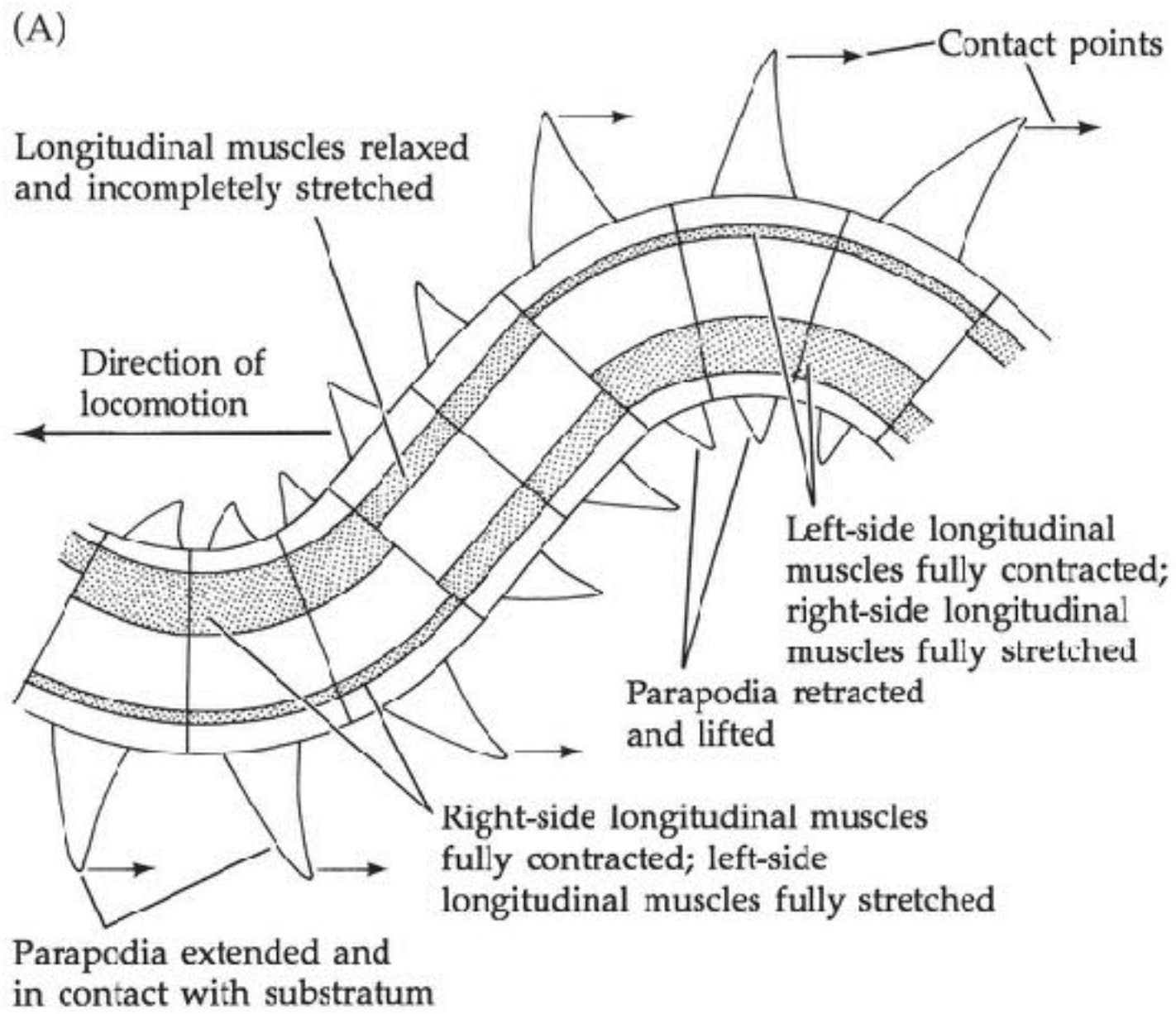
Poliquetas errantes
(*Nereis* spp)





13.7 (C) A nereid polychaete





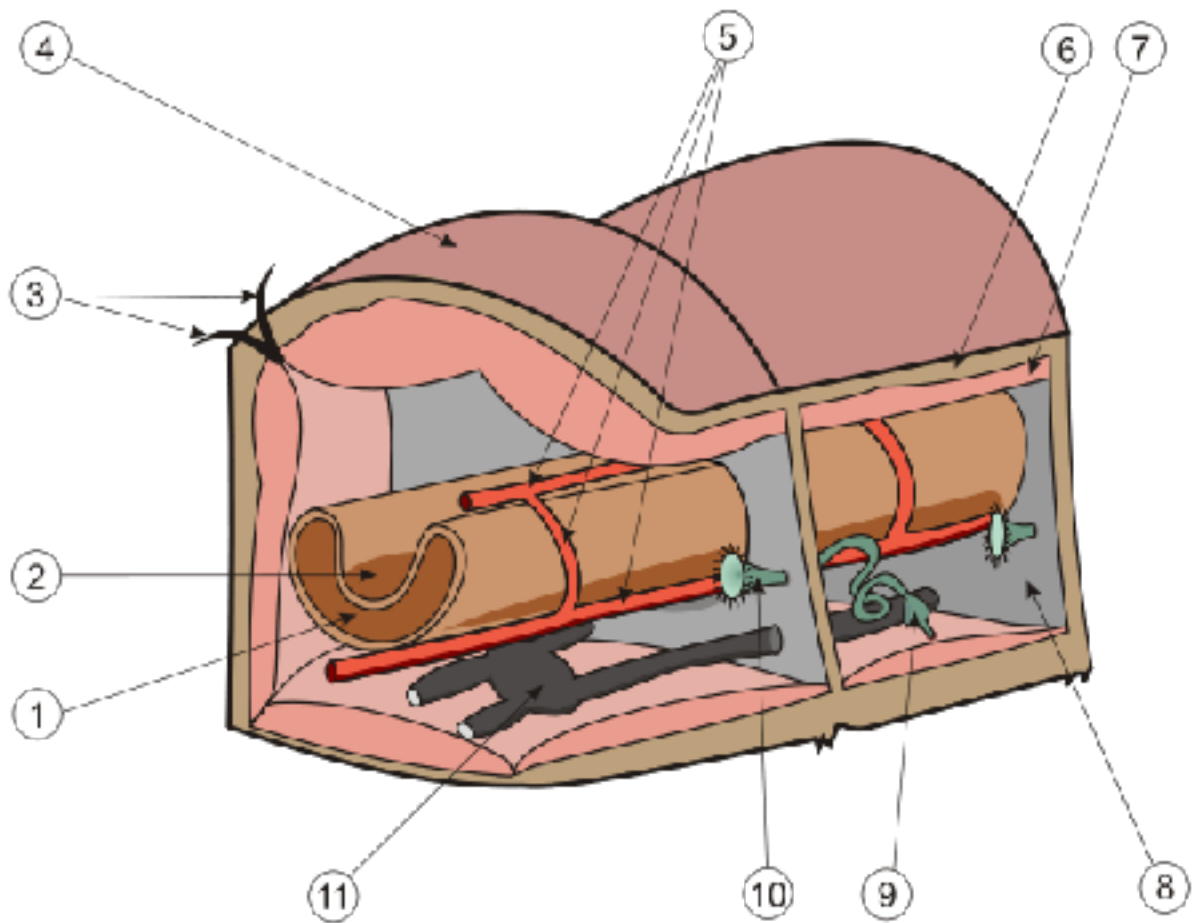


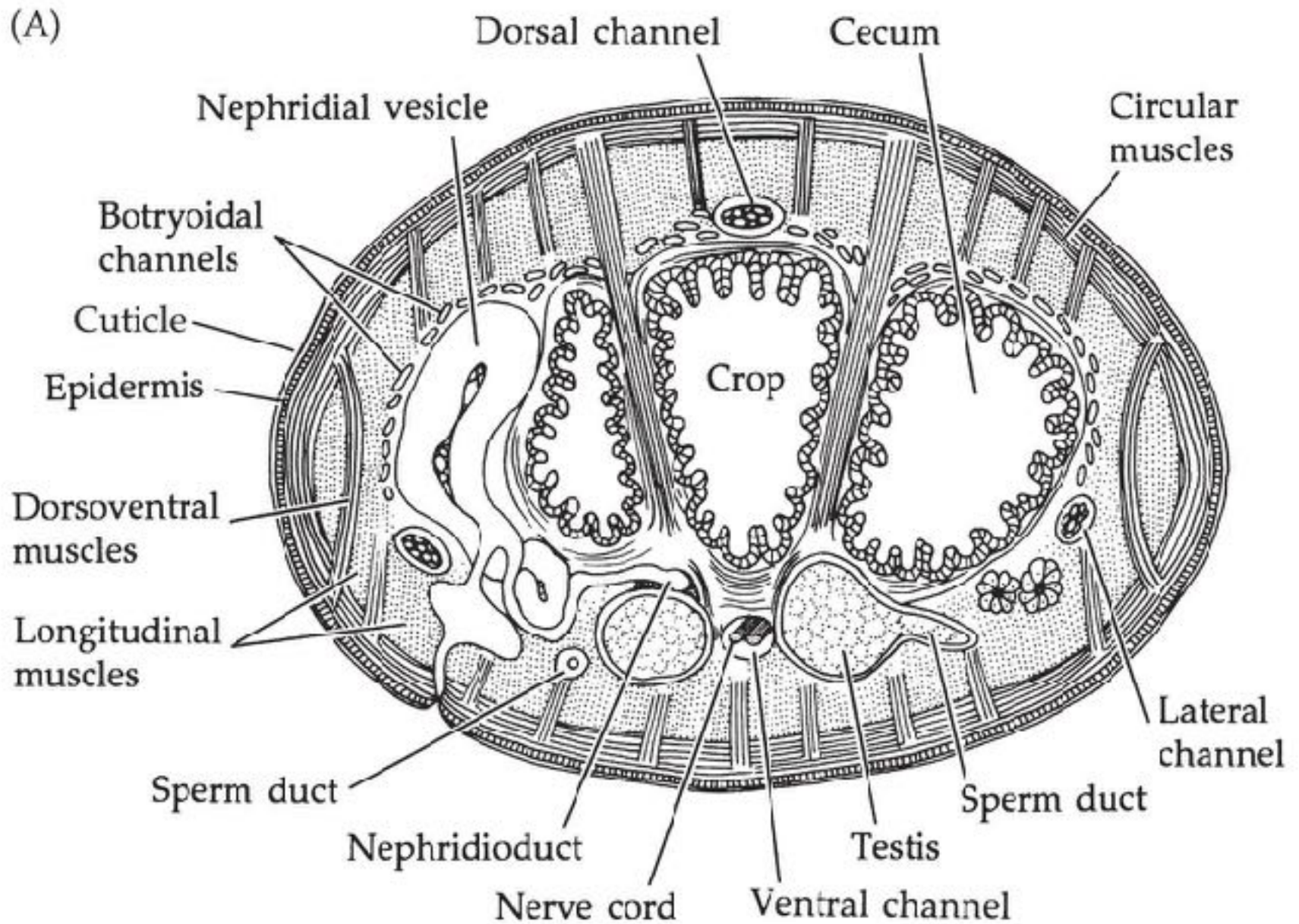
Poliquetas errantes
(*Aphrodita* spp.)

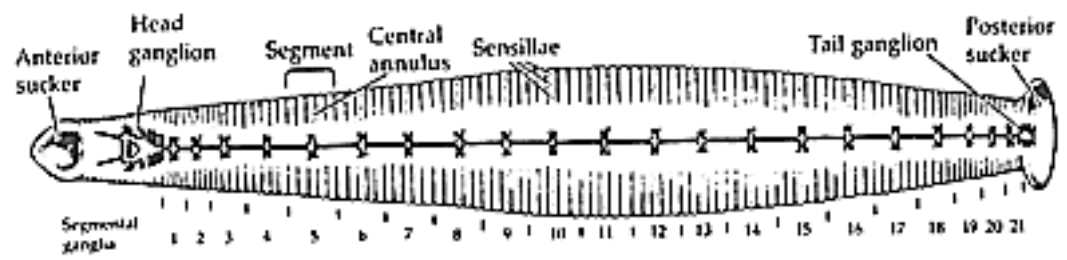


Hirudinea









(B)

